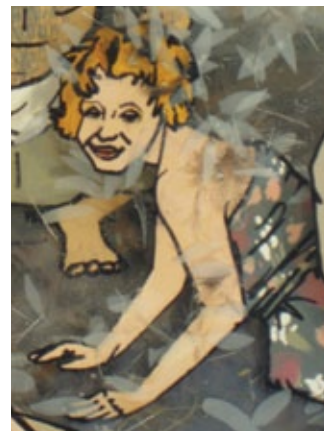




The Sweet Life, acrylic resin, mixed media, 8" x 10" x 3.25"

The Sweet Life, (details)



The Park, acrylic resin, mixed media, 8" x 8" x 3"

## BIOGRAPHICAL NOTES

JESSICA KORDERAS received her Bachelor of Fine Arts with a minor in English from Mount Allison University in 2007. An emerging artist, Korderas is well on her way to establishing herself as a unique talent, captivating the public with her sophisticated use of acrylic resin.

Korderas has participated in group and solo exhibitions since her graduation. Most recently, her inclusion in "Art with Heart", a juried fundraising event for Casey House in Toronto in 2009 garnered her much recognition within the art community. She has also been included in a public group exhibition at The Confederation Centre for the Arts, Charlottetown, PE in 2009, titled, "inbetween", curated by Mireille Eagan.

Korderas' current exhibit "Isolation" marks her second solo show at Gallery Page and Strange, Halifax, NS.

GALLERY PAGE AND STRANGE is a contemporary gallery located in the historic Granville Square of downtown Halifax, Nova Scotia. In close proximity to NSCAD University and other fine art shops and restaurants, the gallery is situated within the heart of the cultural district of the city.

**GALLERY  
PAGE AND  
STRANGE**

Granville Square • 1869 Granville St. • Halifax, NS B3J 1Y1  
t: 902.422.8995 • f: 902.423.0059 • [pageandstrange.com](http://pageandstrange.com)  
GALLERY HOURS: Monday - Friday 10am - 5pm  
Saturday 11am - 5pm or by appointment

© 2009 GALLERY PAGE AND STRANGE Printed in Canada Design: Strange Ideas

# JESSICA KORDERAS

## ISOLATION

April 9 - 30, 2010

GALLERY  
PAGE AND  
STRANGE



## ISOLATION

Not long ago I moved to Halifax, and this was the first time in my life that I had experienced living in a city. The strangest change that came from this move was a feeling of isolation, though from day to day I was surrounded by more people than at any other time in my life. The cliché 'alone in the crowd' kept coming back to me again and again. The work in this exhibition deals with alienation, social anxiety, and loneliness, even in the midst of many people.

The first body of work depicting scenes of common social events deals with these feelings directly, but with an underlying sense of separation and sometimes even hostility. I tried to include at least one figure that was overtly secluded from the crowd. In these pieces the way that the figures play off of one another was very important to me. I like the way layering resin was able to physically remove them from one another, and at the same time freeze them permanently in their positions, with no chance of movement.

In the 'Isolated Thoughts' buildings I wanted to push my interest in the physical divide of an apartment building to a more surreal level. I feel like when you are inside a building, you don't think about the structure as a whole, and it is very easy to forget that you are actually surrounded by people. Everyone is cut off in their own little world, unaware of what can be happening just behind their walls. I chose to make cross sections of buildings full of random things that came to mind to emphasize the (sometimes extreme) situations that can be right next door to each other.

I hope you enjoy this new body of work. Thank you to Victoria and Victoria for their continued support over the past year. I'd also like to give a special thanks to Donnie Thompson of the NSCAD plastics department for all his help.

Jessica Korderas  
Halifax, NS, 2010



ABOVE The Masquerade (detail)

FAR LEFT Isolated Thoughts I (front)  
acrylic resin, mixed media, 21.5" x 6" x 1.75"

LEFT Isolated Thoughts I (back)

BELOW The Pub  
acrylic resin, mixed media, 8" x 6" x 3"



ABOVE The Masquerade, Acrylic resin, mixed media, 12" x 9" x 3.25"

BELOW The Masquerade (detail)

